

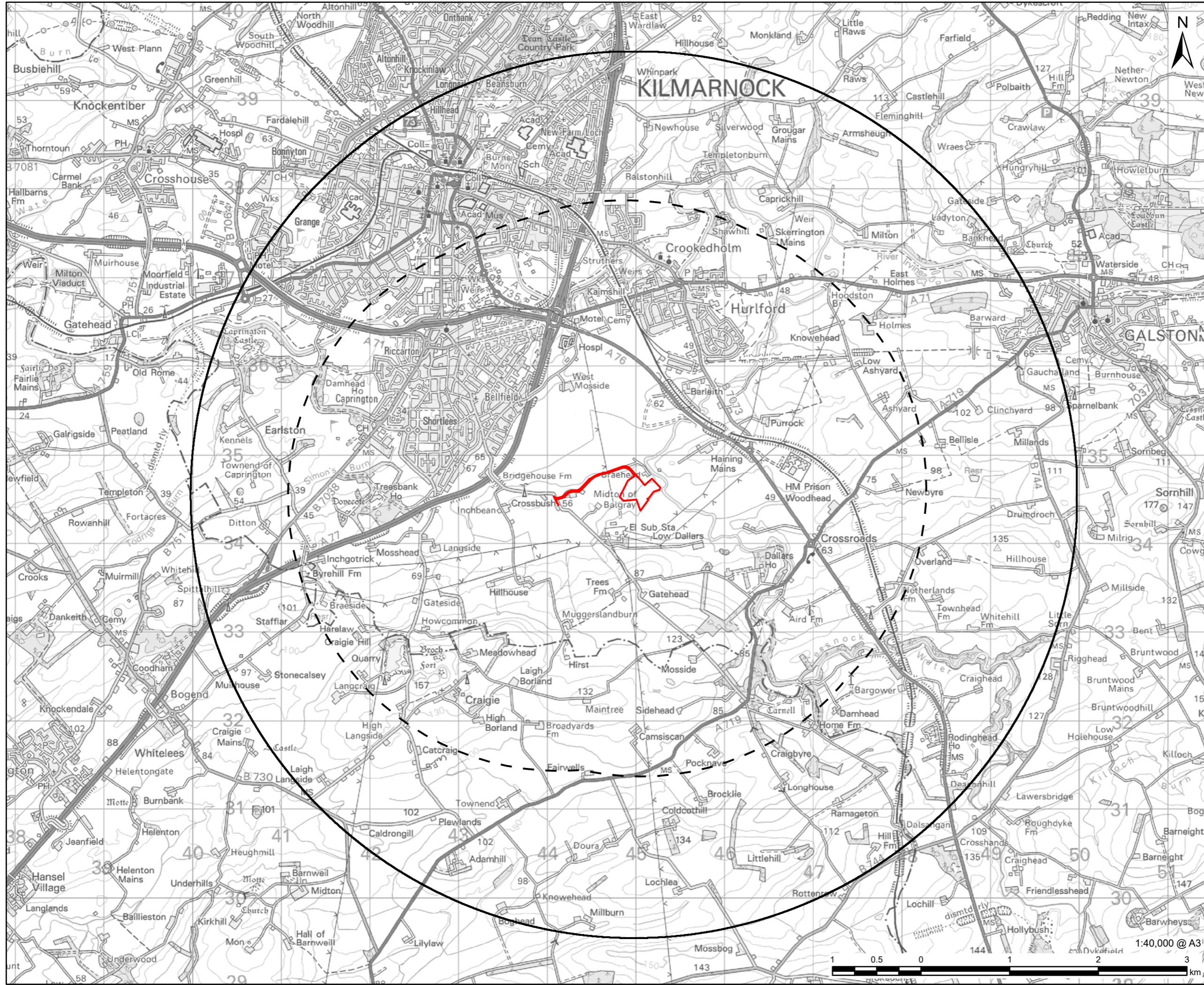
Kilmarnock 500 MW Battery Energy Storage System

Volume 3

Figures 4 - Landscape and Visual

Kilmarnock Energy Centre Limited

September 2023



PROJECT
Kilmarnock Battery Energy Storage System

CLIENT
Kilmarnock Energy Centre Limited

CONSULTANT
AECOM Limited
5th Floor
2 City Walk
Leeds, LS11 9AR
www.aecom.com

LEGEND

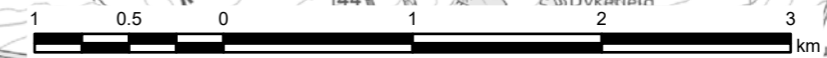
- Scheme Boundary
- 3km Study Area
- ZTV Assessment Area

NOTES
Reproduced from Ordnance Survey digital map data © Crown copyright 2023. All rights reserved. Licence number 0100031673.

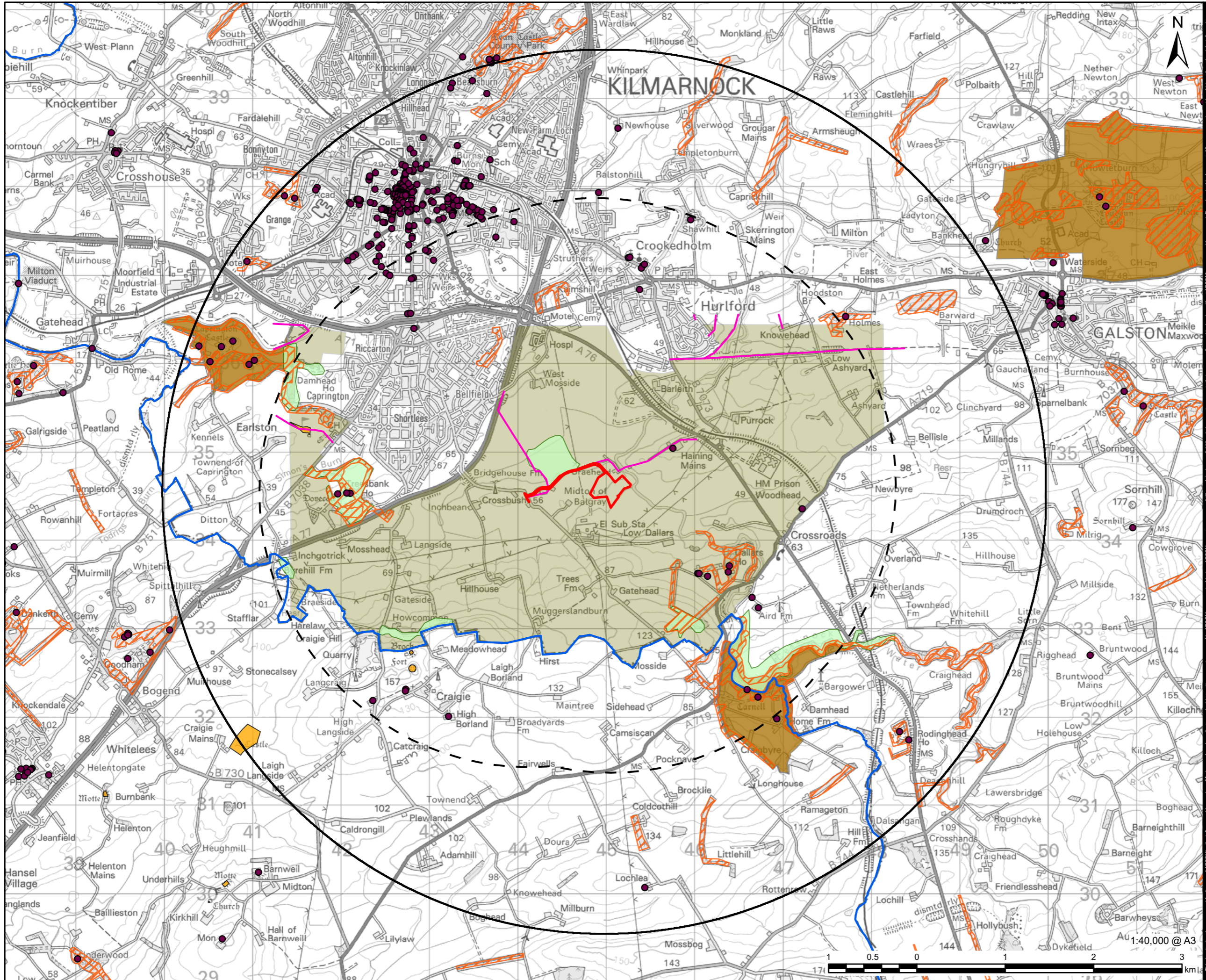
ISSUE PURPOSE
FINAL
PROJECT NUMBER
60650570

FIGURE TITLE
Location Plan

FIGURE NUMBER
Figure 4-1



This drawing has been prepared for the use of AECOM's client. It may not be used, modified, reproduced or relied upon by third parties, except as signed by AECOM or as required by law. AECOM accepts no responsibility, and denies any liability whatsoever, to any party that uses or relies on this drawing without AECOM's express written consent. Do not scale this document. All measurements must be obtained from the stated dimensions.



PROJECT
Kilmarnock Battery Energy Storage System

CLIENT
Kilmarnock Energy Centre Limited

CONSULTANT
AECOM Limited
5th Floor
2 City Walk
Leeds, LS11 9AR
www.aecom.com

- LEGEND**
- Scheme Boundary
 - 3km Study Area
 - ZTV Assessment Area
 - Listed Building
 - Public Rights of Way
 - Ancient Woodland
 - Local Nature Conservation
 - Scheduled Monument
 - Gardens & Designed Landscapes
 - Rural Protection Area
 - Local Authority Boundary

NOTES

Contains Ordnance Survey Data © Crown Copyright and database right 2023.
 Contains SNH information licensed under the Open Government Licence v3.0.
 Contains Historic Environment Scotland and Ordnance Survey data © Historic Environment Scotland - Scottish Charity No. SC045925 © Crown copyright and database right 2023.
 Reproduced from Ordnance Survey digital map data © Crown copyright 2023. All rights reserved. Licence number 0100031673.

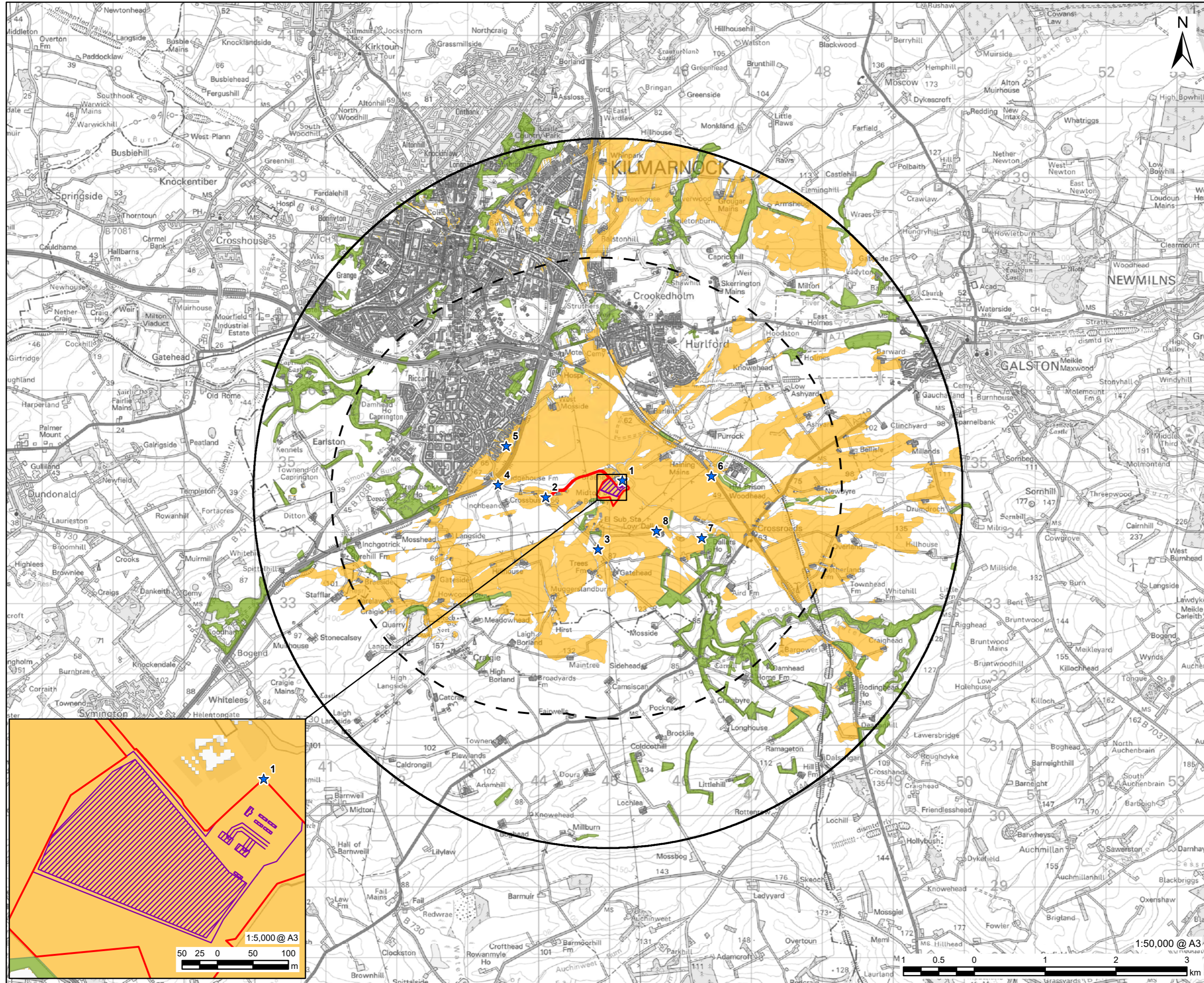
ISSUE PURPOSE
FINAL

PROJECT NUMBER
60650570

FIGURE TITLE
Landscape Character Plan

FIGURE NUMBER
Figure 4-4

This drawing has been prepared for the use of AECOM's client. It may not be used, modified, reproduced or relied upon by third parties, except as agreed by AECOM or as required by law. AECOM accepts no responsibility, and denies any liability whatsoever, to any party that uses or relies on this drawing without AECOM's express written consent. Do not scale this document. All measurements must be obtained from the stated dimensions.



LEGEND

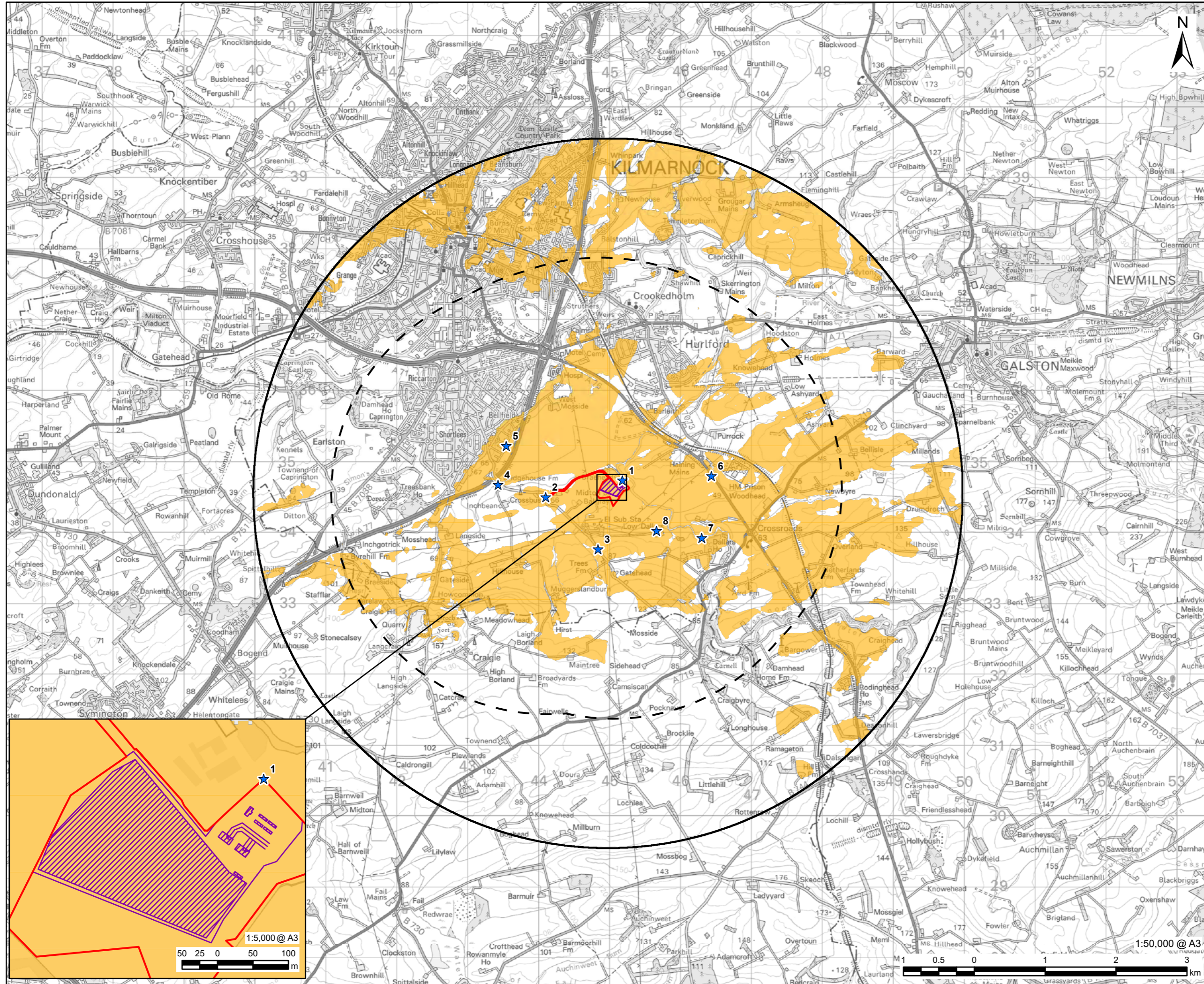
	Scheme Boundary
	3km Study Area
	ZTV Assessment Area
	Viewpoint Location
	Site Layout - Varying Heights
	Existing Building - 7.5m Height
	National Forest Inventory - Woodland - 10m Height
	Zone of Theoretical Visibility

ZTV NOTE:
Zone of Theoretical Visibility (ZTV) has been generated using OS Terrain 5 digital terrain model (DTM) which does not take into account the screening effects of vegetation, buildings or other structures. Existing Buildings have been incorporated into the DTM from OS OS Open Map Local with an assumed height of 7.5m. Woodland from National Forest Inventory has been incorporated into the DTM with an assumed height of 10m. ZTV is based upon a series of points at 10m apart within the BESS Site footprint at varying heights as detailed in the site elevations plans with an observer eye height of 1.6m. All heights mentioned above are above ground level (AGL) unless otherwise specified.

NOTES
Contains Ordnance Survey Data © Crown copyright and database rights 2023
Ordnance Survey 0100031673.
Contains public sector information licensed under the Open Government Licence v3.0.

ISSUE PURPOSE
FINAL
PROJECT NUMBER
60650570
FIGURE TITLE
Zone of Theoretical Visibility Screened

FIGURE NUMBER
Figure 4-5



ZTV NOTE:
Zone of Theoretical Visibility (ZTV) has been generated using OS Terrain 5 digital terrain model (DTM) which does not take into account the screening effects of vegetation, buildings or other structures. ZTV is based upon a series of points at 10m apart within the BESS Site footprint at varying heights as detailed in the site elevations plans with an observer eye height of 1.6m. All heights mentioned above are above ground level (AGL) unless otherwise specified.

NOTES
Contains Ordnance Survey Data © Crown copyright and database rights 2023
Ordnance Survey 0100031673.

ISSUE PURPOSE
FINAL

PROJECT NUMBER
60650570

FIGURE TITLE
Zone of Theoretical Visibility Bare Earth

FIGURE NUMBER
Figure 4-6

This drawing has been prepared for the use of AECOM's client. It may not be used, modified, reproduced or relied upon by third parties, except as agreed by AECOM or as required by law. AECOM accepts no responsibility, and denies any liability whatsoever, to any party that uses or relies on this drawing without AECOM's express written consent. Do not scale this document. All measurements must be obtained from the stated dimensions.